



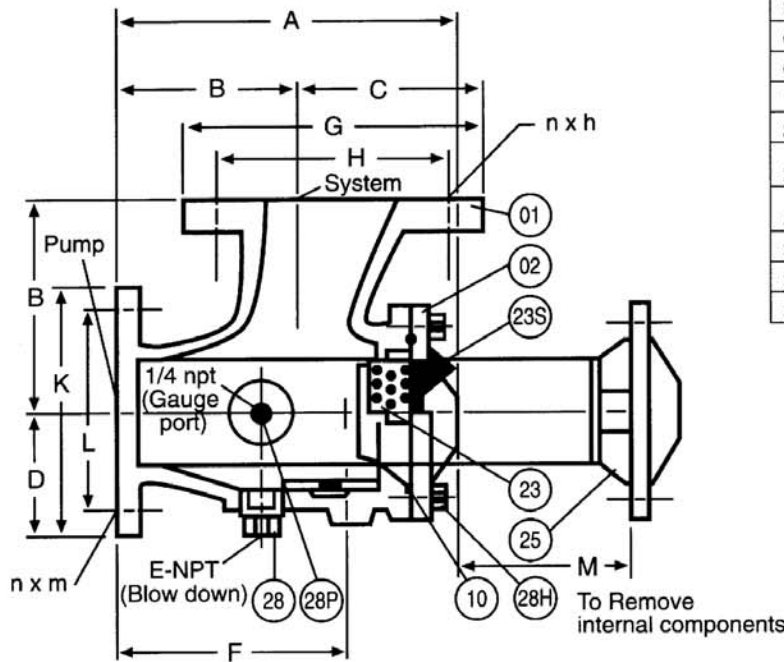
SUCTION DIFFUSER

WORKING PRESSURE: 175 LB
OPERATING TEMP: 300°F

Flanged ends to ANSI B16.1 class 125

MATERIAL LIST

NO.	PART	MATERIAL	SPEC
01	BODY	CAST IRON	ASTM A126-8
02	COVER	CAST IRON	ASTM A126-8
10	O RING	EPDM	COMMERCIAL
23	SCREEN	STAINLESS STEEL	SUS 304
23S	SCREEN START UP*	STAINLESS STEEL	SUS 304
26	BAFFLE ASSEMBLY	STEEL	ASTM A307-8
28	PLUG	MALLEABLE IRON	ASTM A197-8
28P	PLUG	MALLEABLE IRON	ASTM A197-8
28H	BOLT	STEEL	ASTM A307-8



STANDARD SCREENS:

NO.	OPENINGS
23	0.18 PERF
23S (Start Up)	20 MESH

*Start up screen to be removed after start up.

UNIT - INCH

NOMINAL SIZE	DIMENSIONS													NET. WT. LBS.
	A	B	C	D	E NPT	F	G	H	n x h	K	L	n x m	M	
2-1/2 x 2-1/2	9	4-3/4	3-1/2	3-1/2	1	5-5/8	7	5-1/2	4 x 3/4	7	5-1/2	4 x 3/4	7-3/8	36.0
3 x 2-1/2	10	5-1/2	3-3/4	3-1/2	1	6-7/8	7-1/2	6	4 x 3/4	7	5-1/2	4 x 3/4	7-3/8	40.9
3 x 3	10	5-1/2	3-3/4	3-3/4	1	6-7/8	7-1/2	6	4 x 3/4	7-1/2	6	4 x 3/4	7-3/8	41.8
4 x 3	10	6-1/2	4-1/2	3-3/4	1	6-7/8	9	7-1/2	8 x 3/4	7-1/2	6	4 x 3/4	7-3/8	47.5
4 x 4	12-5/8	6-1/2	4-1/2	4-1/2	1	7-5/8	9	7-1/2	8 x 3/4	9	7-1/2	8 x 3/4	9-1/4	68.6
5 x 4	12-5/8	7-1/2	5	4-1/2	1	7-5/8	10	8-1/2	8 x 7/8	9	7-1/2	8 x 3/4	9-1/4	70.0
5 x 5	14-1/4	7-1/2	5	5	1	9	10	8-1/2	8 x 7/8	10	8-1/2	8 x 7/8	9-1/4	73.0
6 x 4	12-5/8	8	5-1/2	4-1/2	1	7-5/8	11	9-1/2	8 x 7/8	9	7-1/2	8 x 3/4	9-1/4	86.2
6 x 5	14-1/4	8	5-1/2	5	1-1/4	9	11	9-1/2	8 x 7/8	10	8-1/2	8 x 7/8	10-5/8	92.4
6 x 6	16-3/8	8	5-1/2	5-1/2	1-1/4	10-1/8	11	9-1/2	8 x 7/8	11	9-1/2	8 x 7/8	11-3/4	120.0
8 x 6	16-3/8	9	6-3/4	5-1/2	1-1/4	10-1/8	13-1/2	11-3/4	8 x 7/8	11	9-1/2	8 x 7/8	12-3/4	141.2
8 x 8	20-1/2	9	6-3/4	6-3/4	1-1/4	11	13-1/2	11-3/4	8 x 7/8	13-1/2	11-3/4	8 x 7/8	15-3/8	228.8

CUSTOMER _____
 PROJECT _____
 ENGINEER _____
 ARCHITECT _____
 PRO. OR P.O. NO _____



STAYFLOW STRAINERS

DESCRIPTION:

**SUCTION DIFFUSER
 MODEL SA**

DRAWN BY:
JO

DATE:
11-99

DRAWING NO:
SD-1(B)